



**Government/Industry Cooperation at  
Regional Level**

**The Global Initiative South East Asia Project**

Alexander Nicolau

ニコラウ アレクサンダー

*Consultant for the Global Initiative South East Asia Project*

*GI SEAプロジェクト・コンサルタント*



PAJ 2009 Oil Spill Response Workshop - March 5, 2009 Tokyo, Japan



**Outline**

---

- Background on GI
- East Asia Oil Risk Profile
- South East Asia Focus
- Tools and Deliverables
- Way Forward



## Background on GI

- Partnership based on the relationship between the IMO and IPIECA
- Regional model involving regional players
- Enhance oil spill preparedness and response capacity at priority locations
- Assistance in developing national response systems
- Encouraging ratification & implementation of oil spill related conventions
- Regional Cooperation within the framework of OPRC

## Background on GI – 6 Regions



1 Mediterranean (MOIG)

2 Caspian Sea, Black Sea and Central Eurasia (GI OSPRI)

3 West and Central Africa (GI WACAF)

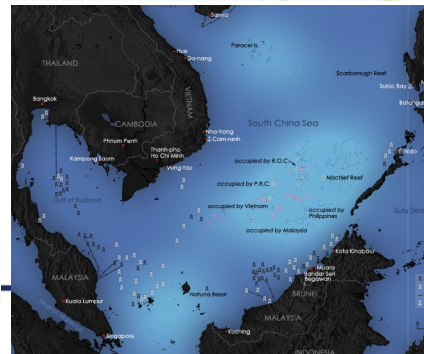
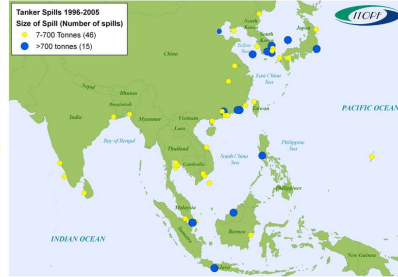
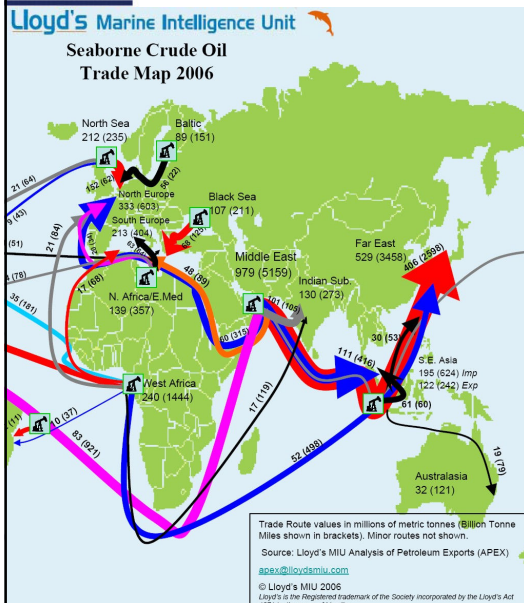
4 Latin America/Caribbean

5 South East Asia Seas

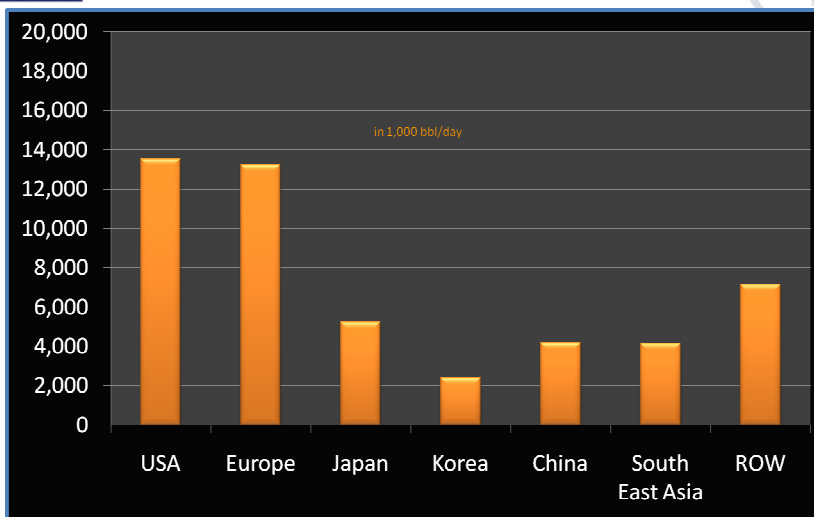
6 North West Pacific

# East Asia Oil Risk Profile

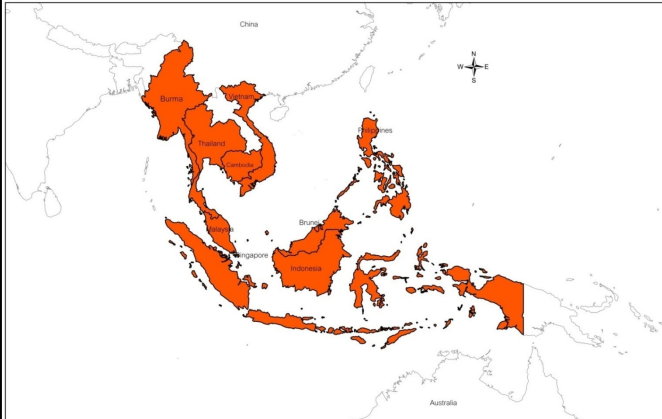
## REGIONAL TANKER SPILLS (1996-2005)



# Crude Oil Import in Selected Countries



## South East Asia Focus



9 ASEAN Countries

No oil spill group under the UNEP framework (e.g. NOWPAP)

Support from 5 IPIECA members for a methodology and draft action plan in 2008 (phase 1)

## The 6 Elements of Preparedness

- Legislation
- Contingency Planning
- Equipment and Resources
- Training
- Exercises
- Forces for Implementation

## Tools and Deliverables

- Relative Risk Matrix for Priorities
- Funding Mechanism
- Contact Database
- Advanced Country Profiles
- Stakeholder Mapping

## Relative Risk Evaluation

Criteria Number	Type of Risk	Weighting Low	Weighting Medium	Weighting High
C1	Oil Production Risk	1	2	3
C2	Arriving / Departing Ship Risk	1	2	3
C3	Passing Ship Risk	1	2	3
C4	Neighbouring Countries Risk	1	2	3
C5	General Level of Preparedness	2	4	6
C6	Cooperation Potential	1	2	3
	Indicative Total Risk	$\sum_{i=1}^6 R_i$ With $R_i$ being the risk factor for each of the criteria defined in this table		

# Funding – Contribution Formula

Production				Oil terminals / Refining	Shipping	Total Contribution Factor
Band 4	Band 3	Band 2	Band 1	0.25	0.25	0.25 to 1.50
0.25	0.50	0.75	1.00			

$$Total\ Budget = \sum_i NiCiE$$

$$E = \frac{Total\ Budget}{\sum_i NiCi}$$

$$Contribution\ of\ Participant\ p = CpE$$

*E* = elemental contribution; *i* = number of participants

*Ni* = number of participants having the same contribution factor *Ci*

*Ci* = contribution factor (varies between 0.25 to 1.5)



# Advanced Country Profiles

Country Profile  
 • G7 SEA •  
 IMO / IPIECA Global Initiative for South East Asia

**THAILAND**

**National authorities for oil pollution preparedness and response**

Competent National Authority(ies) with responsibility for oil pollution preparedness and response

Ministry - Ministry of Transport  
 Organisation - Marine Department  
 Address: 1278 Yotha Rd, Talat Noi, Samsornrawong, Bangkok 10100  
 Contact: Tel: +66 2234 3822, Fax: +66 2236 7248, Email:

Competent National Authority(ies) officially designated

Decree:

National operational contact point(s) responsible for the reception and transmission of oil pollution reports

Organisation: Address: Contact: Same as above

Other National Agencies in charge of elements of oil pollution preparedness and response

Organisation: Address: Contact:

Pollution Control Department (PCD): Bangkok, Attn: Tel: Fax: Email:

Royal Thai Navy (RTN): Sattahip Base, Attn: Tel: Fax: Email:

Authority which is entitled to act on behalf of the State to request or provide assistance

Organisation: Address: Contact:

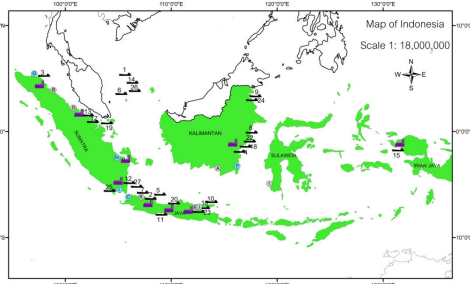
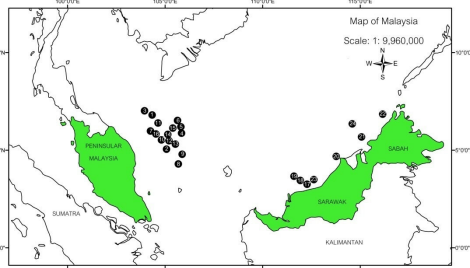
Representative(s) of the oil industry for oil pollution preparedness and response

Organisation: Address: Contact:

Industry Environment and Safety Group Association (IESG)



Name of the country: Kingdom of Thailand  
 Capital: Bangkok  
 Official language: Thai  
 Population in 2008: 65 million (E)  
 Length of coast: 3,219 km  
 Surface: 513,115 km<sup>2</sup>  
 Production (1,000 bbl/day): 712 (2007 E)  
 Estimation of reserve (million bbl): 240 (2007 E)

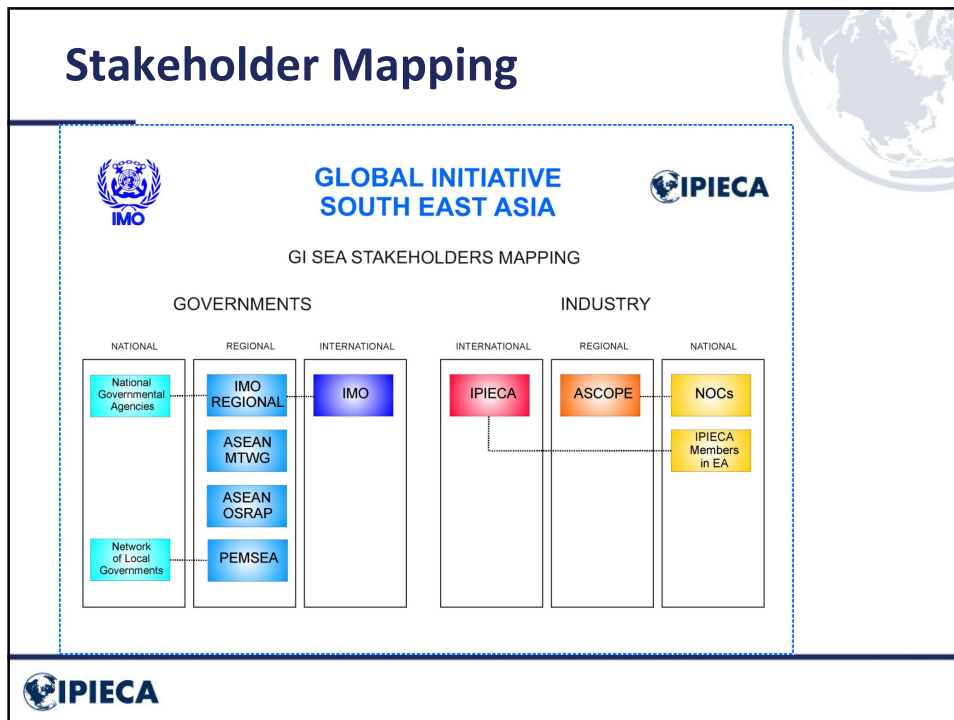


INDONESIA DOWNSTREAM OPERATIONS  
 Created: December 2008  
 Oil Spill Response

Legend  
 Oil Terminal, Refinery, Large Port, Small Port

Notes:

# Stakeholder Mapping



# Way Forward

- Essential preparation work completed
- Consultation with countries still required to define national priorities
- Re-evaluate and validate a joint action plan in partnership with IMO
- Continuation of stakeholder engagement at regional level

## Way Forward

---

- ASEAN OSRAP Meeting planned in 1<sup>st</sup> semester 2009
- IMO/IPIECA/Oil Spill Response Workshop at the EAS Congress in Manila November 2009
- The GI partnership IMO/IPIECA in Asia is considering the way forward